

Colonial Beach, Virginia

Public Workshop #3: Implementation

A Vision for the Future...



March 24, 2009

LandStudiopc

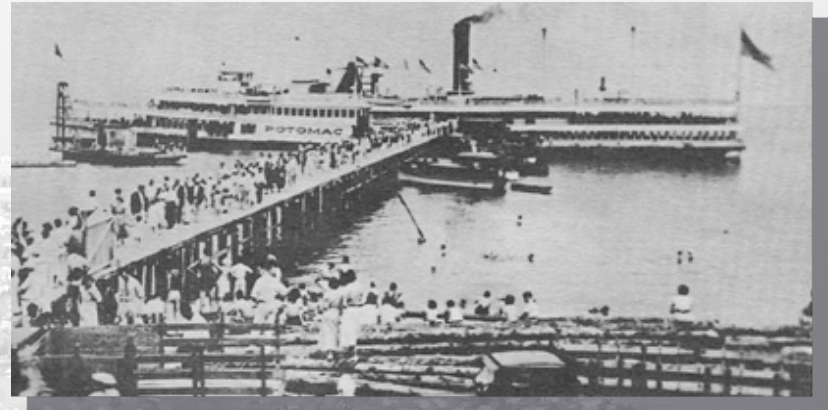
Meeting Format & Objectives

Information Exchange

- Discuss Implementing the Comprehensive Plan
- Learn more about various implementation strategies such as:
 - National Historic Districts
 - Enterprise Zones
 - The Main Street Approach
- Group Discussions about the top priority goals and strategies to achieve those goals
- Validate the work to date and provide comments as needed

How we got here...

Inventory and Analysis Community Survey



How we got here...



Visioning Workshop

Future Land Use Workshop



What we have...

Inventory and Analysis Chapters

Community Survey Results

Vision Statements

Future Land Use Plan and Map

Goals, Objectives,
and Strategies



Next Step...

Develop a Detailed Implementation Plan



What?



Who?



How?



When?



Implementation Strategies

What?

Identifying what is most important

- Understanding the Interrelations
- Multiple Benefits



Implementation Strategies

An aerial photograph of a coastal town, likely in New Zealand, showing a harbor with a marina, residential areas, and green hills in the background. The image is faded and serves as a background for the text.

Who?

Being sure to include all the players

- Town Staff
- Planning Commission / Town Council
- Professional Consultant
- Citizen Group
- Partnerships with other organizations

Implementation Strategies

How?

Address Funding,
Resources, Strategies

- Grants and/or CIP
- State Agencies, Universities, Other Organizations
- Multiple Avenues to Pursue



Virginia
Enterprise
Zones



Implementation Strategies

An aerial photograph of a coastal town and harbor, showing a large body of water, a town with many houses, and a harbor with several boats and docks. The image is in black and white and serves as a background for the text.

When?

Establish a timeline

- Short Term and Long Term Strategies
- Accountability and Progress Evaluation

Please Remember that...

Implementing the Comprehensive Plan

Takes Time

10 to 20 year Planning
Document

Takes Follow Through

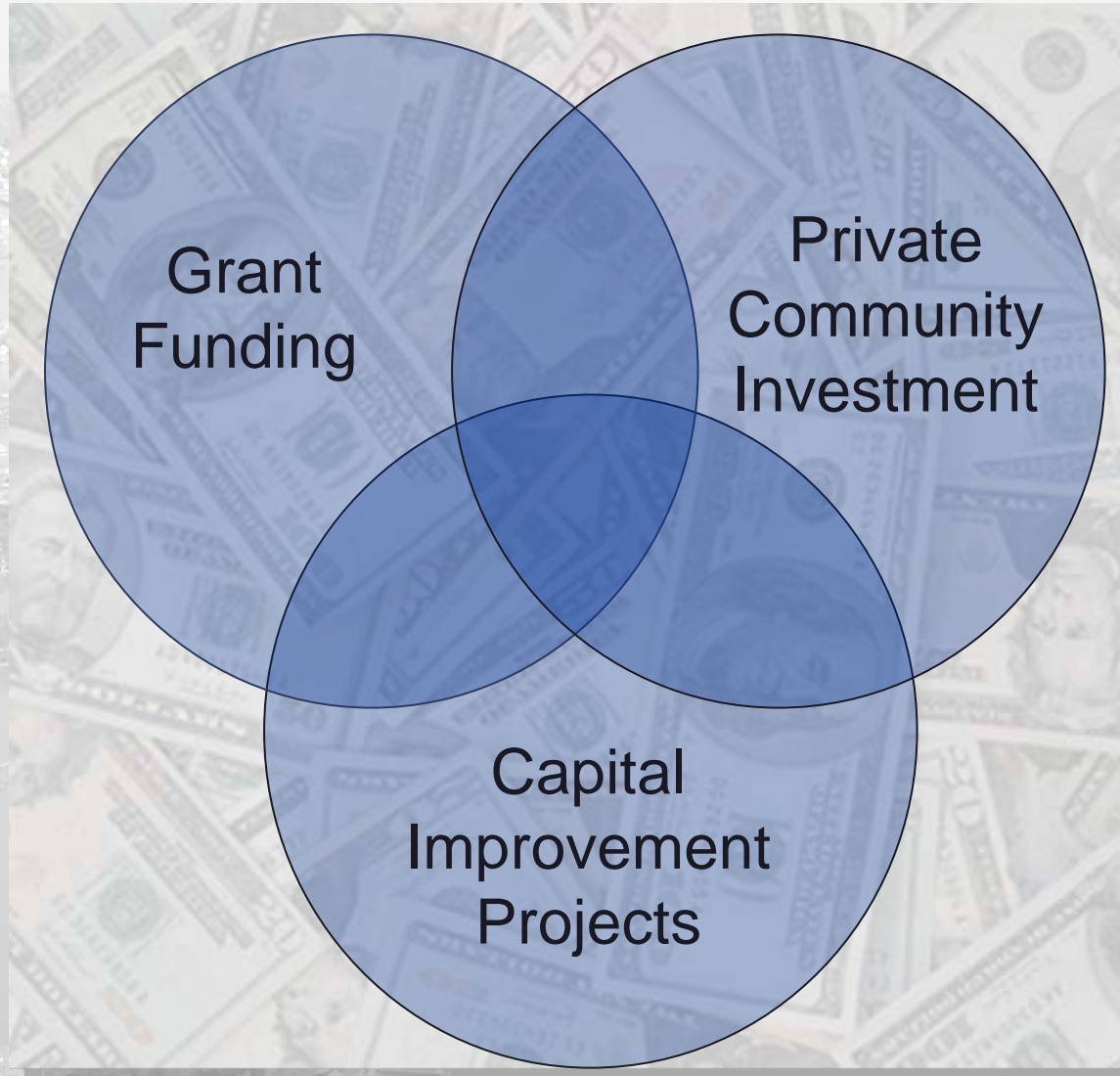
Clear guidance in the
Implementation Section

Takes People

Everyone has a Role to Play

and...

Takes Funding



An aerial photograph of a coastal town, likely in the Pacific Northwest, showing a large body of water in the foreground, a small island in the middle ground, and a larger landmass in the background. The town is built on the landmass, with a prominent harbor area and a small airport or marina. The water is calm, and the sky is clear.

Establishment of a Historic District

Enterprise Zones

The Main Street Approach