

The image is a title slide for a design workshop. It features a background photograph of a stone archway leading to a garden. The archway is supported by two large, square stone pillars. In the center of the archway is a sign with the Riverside Cancer Care Center logo and the text 'RIVERSIDE CANCER CARE CENTER'. The foreground shows a garden with various plants, including what appear to be sunflowers. The text is overlaid on the image in a clean, black, sans-serif font. The overall tone is bright and professional.

Riverside Cancer Care Center

Healing Arts Garden

Design Workshop

# Meeting Objectives

11:00 Project Overview

Goals

Findings / Survey Results

Preliminary Master Plan Review

11:45 Break (light lunch)

12:00 Open Discussion

Needs Desires for an Outdoor Healing Environment

What Works / What Doesn't / Other Thoughts

1:45 Summaries / Conclusion

# Healing Gardens

- Utilize a variety of garden features
- Reduce stress
- Have positive influences on patients, visitors, and staff
  - In a study on the use of hospital gardens, 95% of those interviewed reported a positive change of mood after spending time outdoors.
- Contain prominent amounts of real nature content such as green vegetation, flowers, and water
- Vary greatly in size and can be outdoor or indoor spaces

# Healing Gardens

## Three Approaches to Design

- Traditional (labyrinth)
- Botanical / Ecological (use of plants)
- People Oriented (discovering the feelings and needs of the patient, staff, and families)



# Healing Garden

## Design

- Should be designed in a user-centered, supportive environment
- Research and input from patients and staff are key in the design process



# Healing Gardens

## Two Objectives

- Create a place
- Facilitate a process



# Healing Arts Garden Design

## Symbolic Elements of Healing

- Light
- Water
- Winding Path
- Bridge / Passageway



# Healing Gardens

## Goals

- Provide sense of comfort
- Redirect thought
- Reduce stress
- Uplifting environment
- Provide a sense of hope
- Space to socialize
- Space to reflect





# The Site



# The Site

## Opportunities

- Visual and Physical Linkages





# The Site

## Constraints

- Adjacent parking / road
- Lack of shade
- Chemotherapy Treatment Location



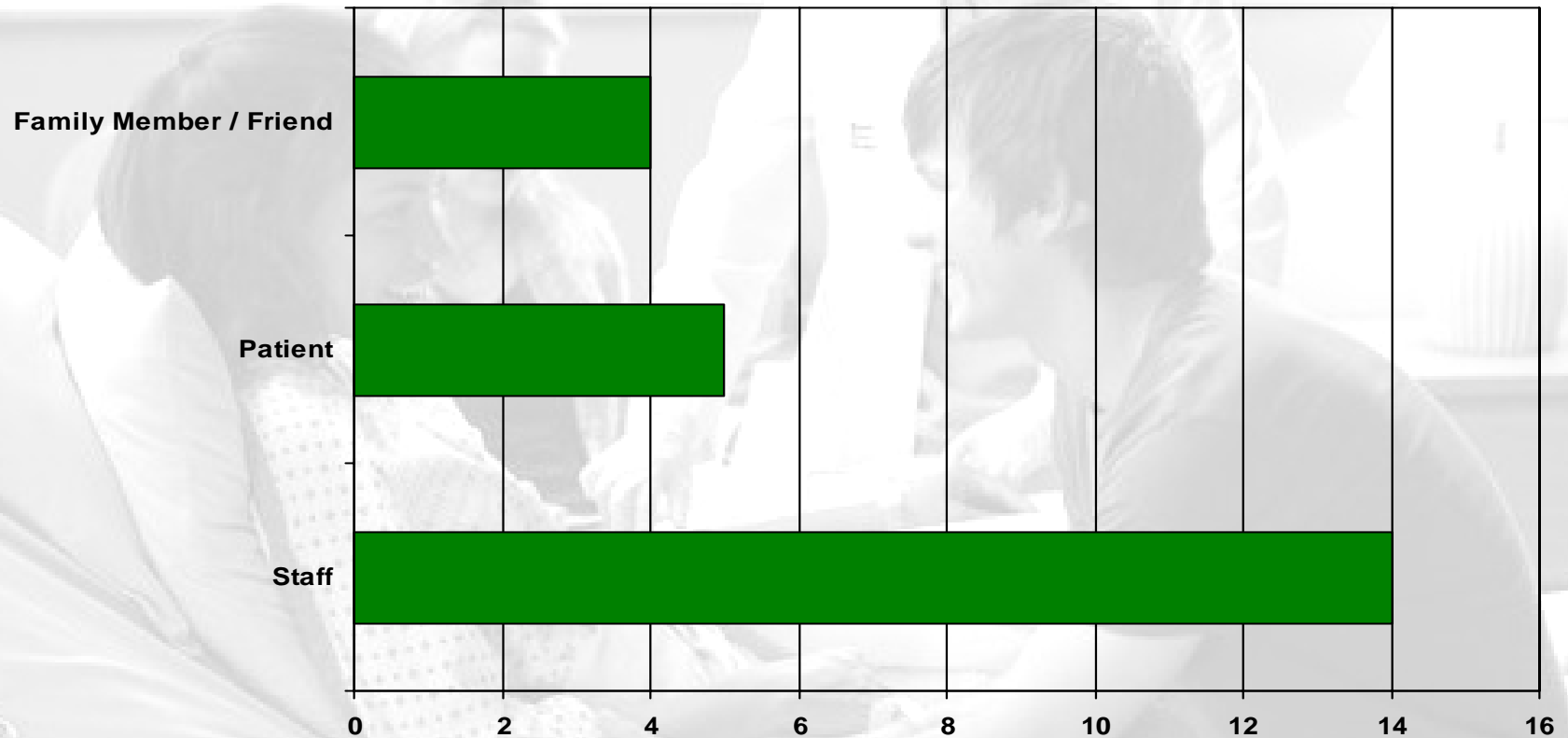
# Discoveries

- Patients feel a loss of control and desire the ability to control / manipulate their environment
- Individuals in a distressed mind frame find distress in things others would not, i.e. dying flowers, abstract art, etc.
- Others?



# Survey Results / Findings

## Respondents Affiliations



# Survey Results / Findings

## Description of a healing environment

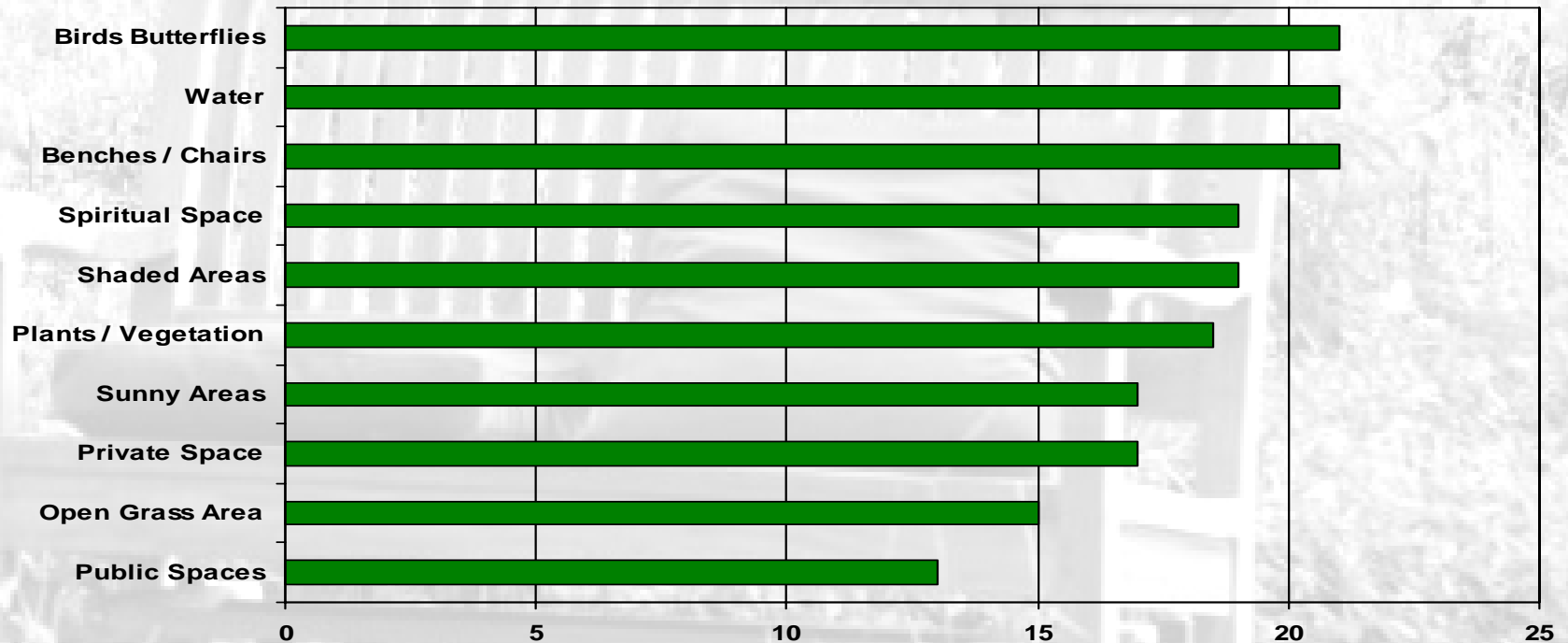
- Water
- Colorful shrubs and trees
- Soft fragrances
- Sounds sights of nature (birds, butterflies)
- Bells / chimes / sound of water
- Sun/shade
- Comfortable seating
- Private seating
- Breezes

## Rituals

- Meditation
- Reading
- Observation of Nature
- Prayers
- Hands or feet in running water
- Walking

# Survey Results / Findings

## Important Garden Elements



## Other Good Ideas

- Rocking Chairs
- Archway, symbolizing entrance into stress free environment

# Survey Results / Findings

## **Elements or Qualities that would draw individuals into the space**

- Water
- Comfortable Seating
- Quiet private space
- Flowers / attractive plants
- Vertical feature visible from parking area to attract attention



# Survey Results / Findings

## Visual Preferences for a healing environment



11



10



9



9



16



9



5



1

# Survey Results / Findings

## Visual Preferences for a healing environment



13



12



6



4



9



4



12



0

# Survey Results / Findings

## Visual Preferences for a healing environment



12



11



11



6

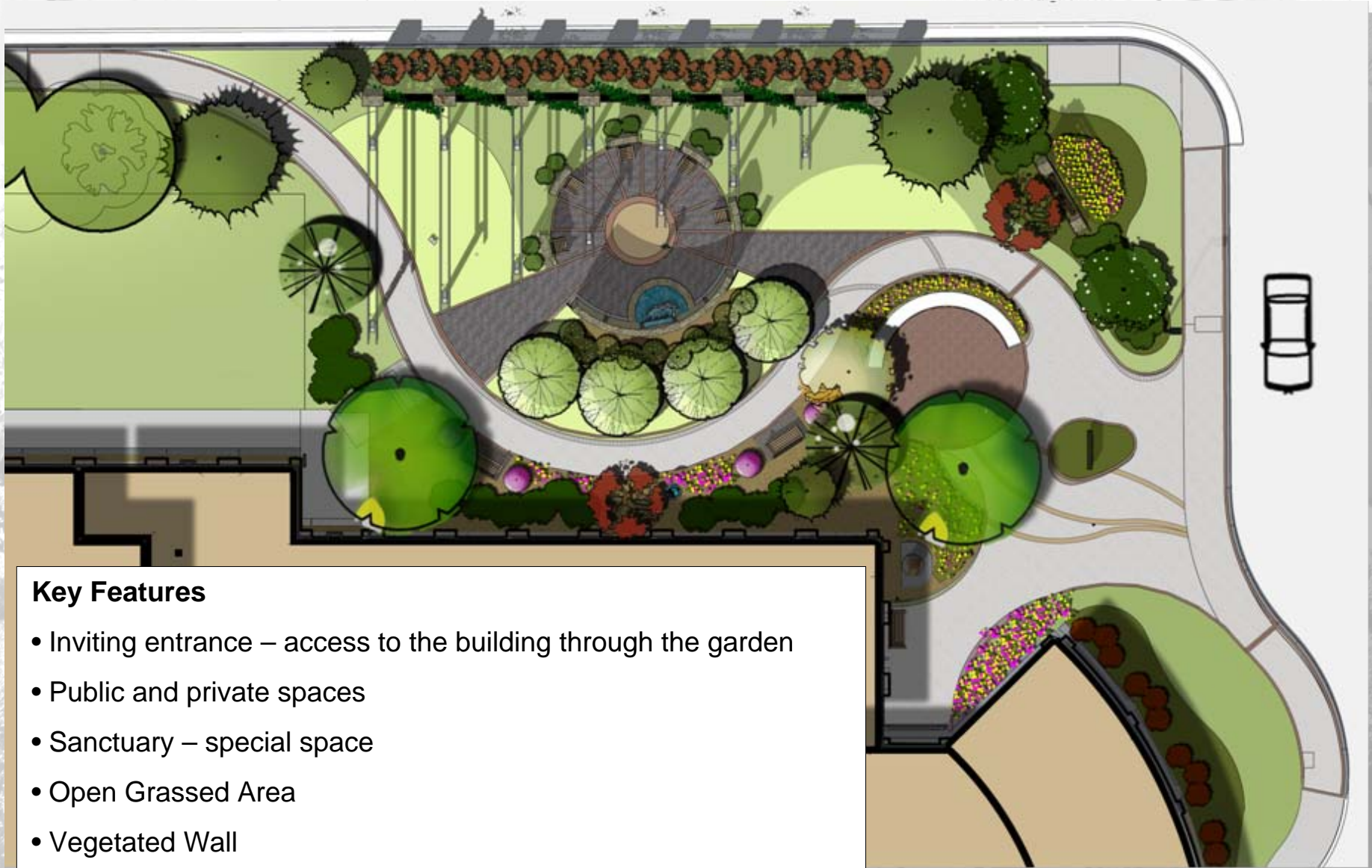


12



3

# Site Master Plan



## Key Features

- Inviting entrance – access to the building through the garden
- Public and private spaces
- Sanctuary – special space
- Open Grassed Area
- Vegetated Wall
- Use of water and botanical materials

# Garden Presentation

## Key Features

- Vegetated wall to buffer garden from adjacent roadway
- Stone columns to intrigue passers



# Garden Entrance

## Key Features

- Wide welcoming entrance
- Vertical structure to attract attention



# Garden Presentation



# Garden Interior

## Key Features

- Winding Path
- Sitting Opportunities Along Path
- Sanctuary Entrance
- Medicinal Plants Surround the Sanctuary





# Medicinal Plants



*Camptotheca acuminata*



*Podophyllum peltatum*

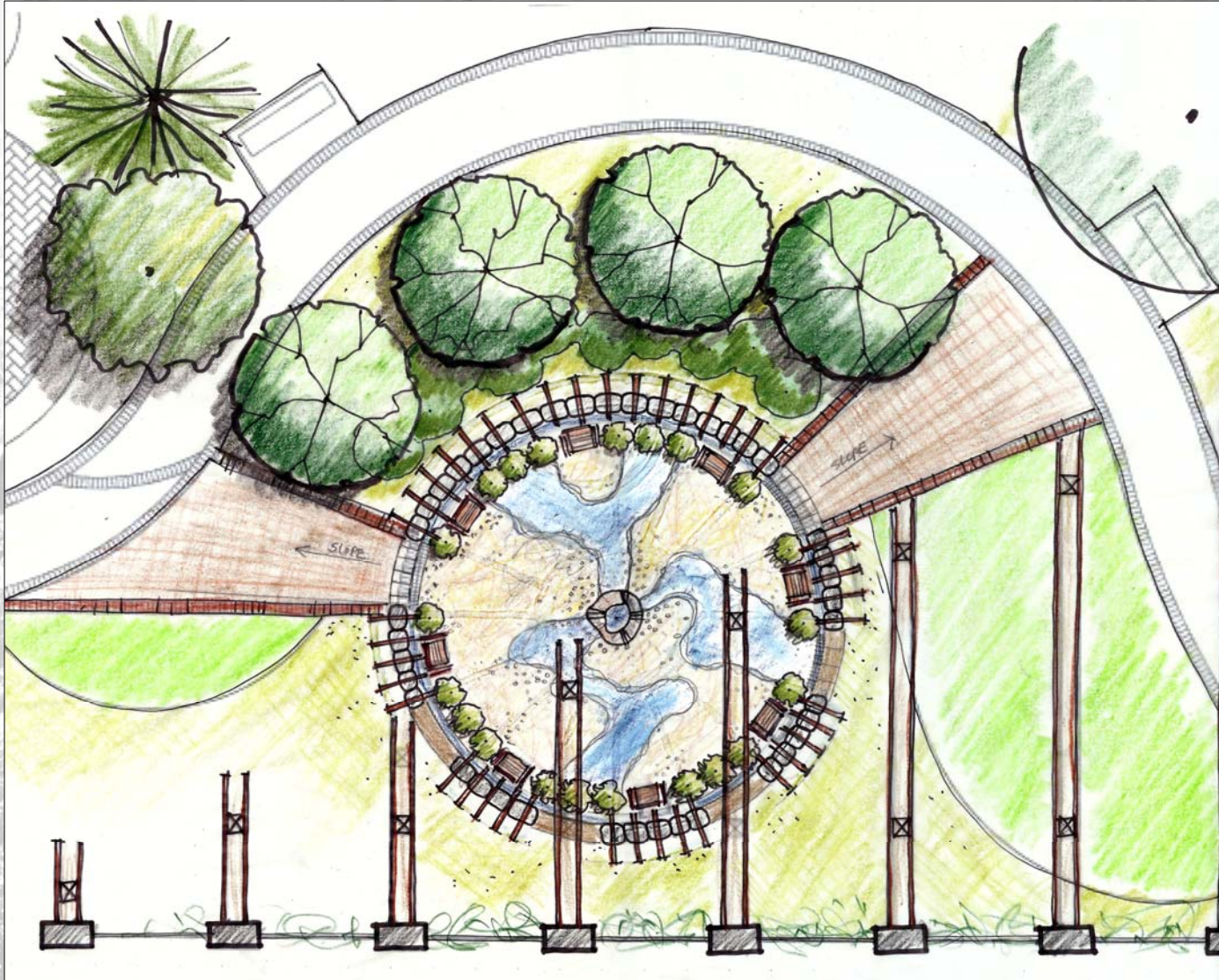
# Sanctuary

## Key Features

- Water
- Sand
- Contemplation



# Sanctuary



## Key Features

- Subtle Water
- Sand
- Contemplation

# Open Lawn Area



# View From Radiation



# Donation Opportunities

An architectural rendering of a park plaza. The central feature is a large, circular, multi-tiered structure with a central circular opening, possibly a water feature or a monument. The plaza is surrounded by various seating areas, including benches and a large, curved wall. There are several trees and shrubs scattered throughout the space. In the background, a multi-story building is visible. The overall style is a detailed line drawing with some shading to indicate depth and texture.

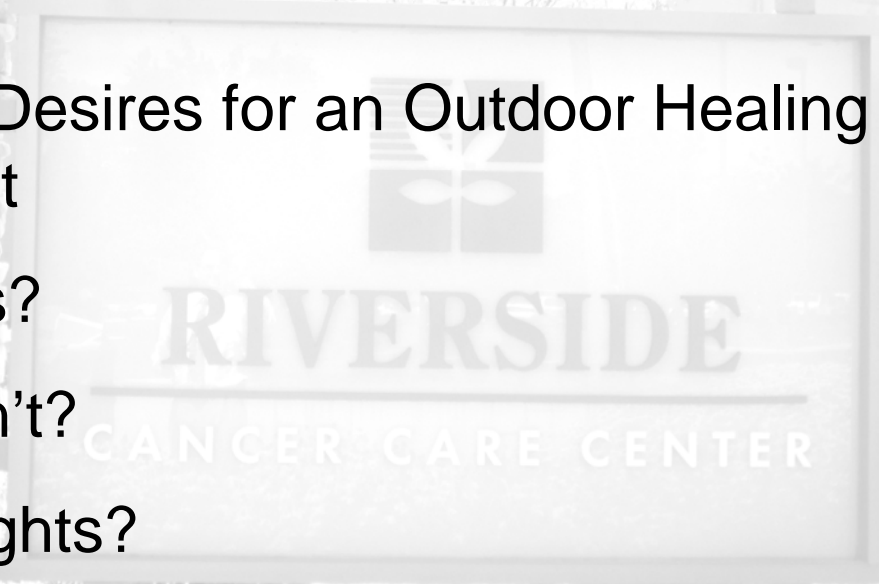
Inspirational vs memorial

- Benches
- Panel Walls
- Water Feature
- Tree of Life

# Open Discussion

## After the Break

- Needs and Desires for an Outdoor Healing Environment
- What Works?
- What Doesn't?
- Other Thoughts?



# Next Steps

- Finalization of Concept Plan
- Finalization of Concept Perspectives
- Development of Marketing Brochure
- Fund raising
  - Events
  - Presentations

A large, rectangular sign with a stone pillar on the left and right sides. The sign features a logo at the top center, which is a stylized leaf or plant. Below the logo, the word "RIVERSIDE" is written in a large, serif font. Underneath "RIVERSIDE", there is a horizontal line, and then the words "CANCER CARE CENTER" are written in a smaller, sans-serif font. The sign is mounted on a dark metal frame.

RIVERSIDE  
CANCER CARE CENTER